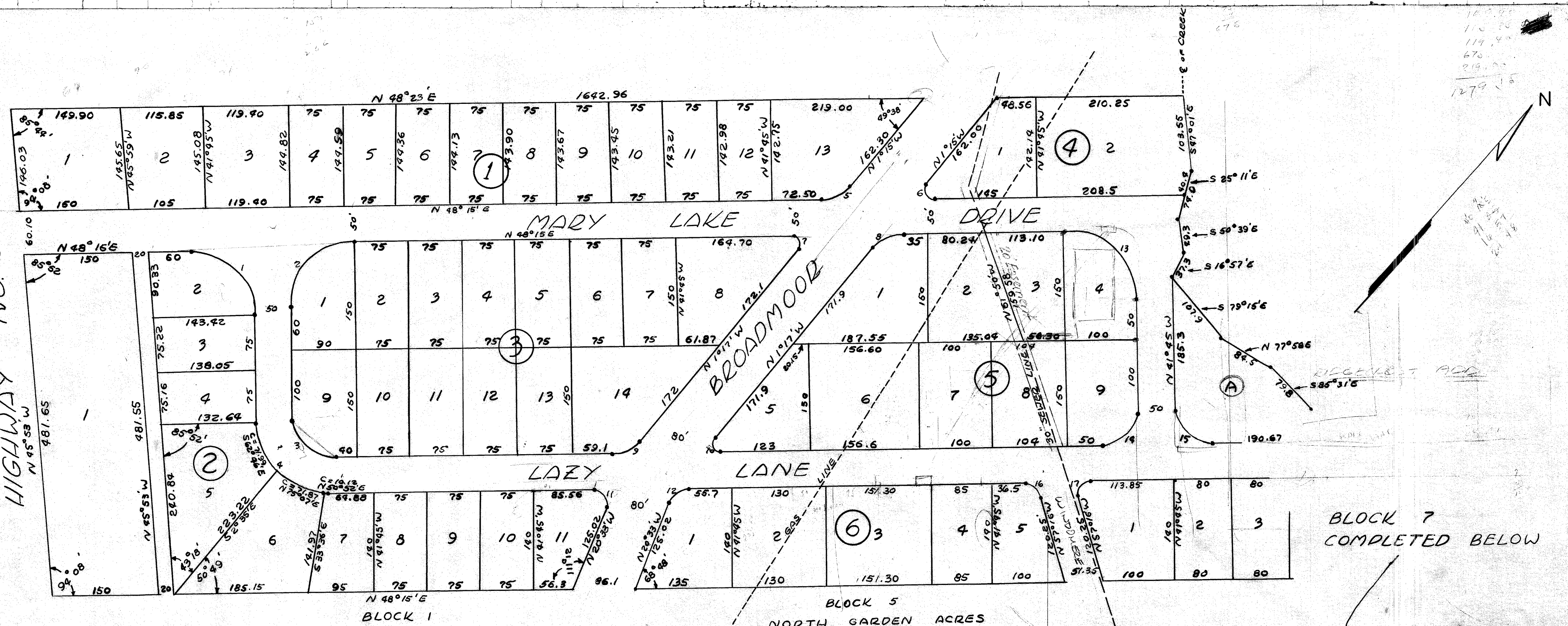


HIGHWAY NO. 6

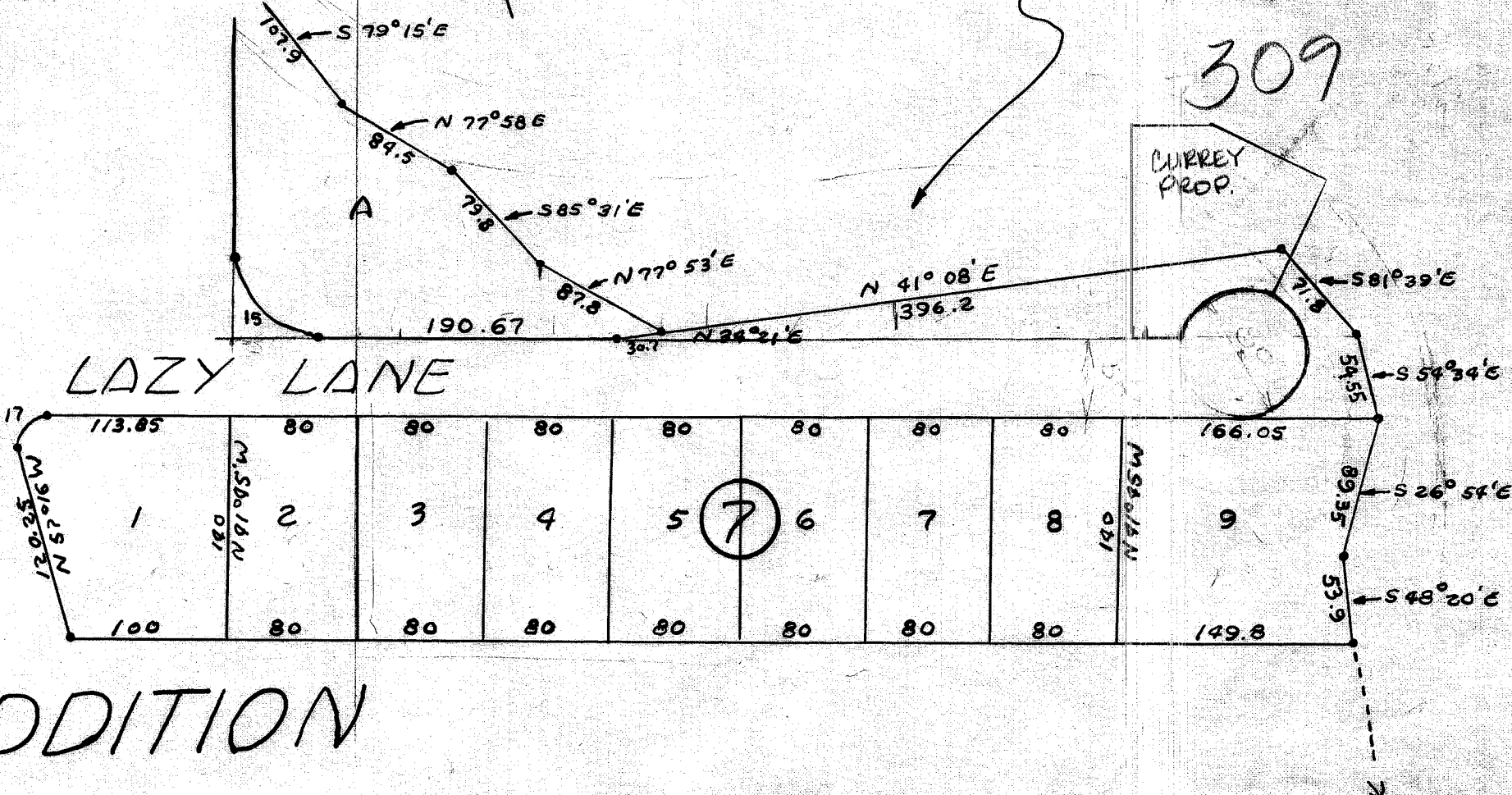


BLOCK 7 COMPLETED BELOW

CURVE DATA

	Δ	D	T	LC	A
1	90°	90'	90'	63.64	70.69
2	90°	90'	90'	63.64	70.69
3	90°	50'	50'	35.36	39.27
4	90°	100'	100'	70.71	78.54
5	49°31'	54.20	25	45.39	46.84
6	130°29'	11.53	25	20.94	26.26
7	130°29'	11.53	25	20.94	26.26
8	49°32'	54.19	25	45.90	46.84
9	49°32'	54.19	25	45.40	46.84
10	130°28'	11.53	25	20.94	26.26
11	111°12'	17.12	25	28.26	33.23
12	68°48'	36.51	25	21.26	43.84
13	90°	100'	100'	70.71	78.54
14	90°	50'	50'	35.36	39.27
15	90°	50'	50'	35.36	39.27
16	74°29'	32.88	25	39.80	42.74
17	105°31'	19.01	25	30.26	35.01

NOTE: ALL LOT CORNERS AND CURVE POINTS ARE MARKED WITH IRON BARS.



RIDGECREST ADDITION

D/R VOL. 150 P. 83

JULY 25, 1951

SCALE 1"=100'

on books with

167.90
112.50
114.40
670
219.00
1279

309

CURREY PROP.